

## Switchgear type RKS5-1/F

for rated voltage 500V



Switchgear type RKS5-1/F is an electrical device designed for use in the underground mining pits in non-explosive conditions and on the ground.

Switchgear type RKS5-1/F is designed for connecting and switching on receivers (especially fans) in the 3-phase mine grid with insulated star point on the transformer (system IT) of rated grid voltage of 500V.

The switchgear is equipped with electrically protected against short-circuiting, overloading, low insulation resistance and control system of resistance to earth.

### TECHNICAL DATA:

ingress protection	IP54
insulation rated voltage of main circuits	660 V
insulation rated voltage of auxiliary circuits	250 V
supply rated voltage	500V, 50 Hz
rated voltage of control circuits	24V, 50 Hz
maximum outlet load current	acc. to Tab.1
number of 500 V outlets	1
dimensions	1300 x 720 x 400mm (height x width x depth)
weight	60kg

Table 1

Type of switchgear	Maximum outlet rated current without frequency converter [A]	Rated current of clamps from the supply side (Inz) [A]
RKS5-1/F	60	400

Note:

Ampacity of outlets can be adapted for the power of supplied receivers on request, however they can't exceed value in table 1.

## CONSTRUCTION

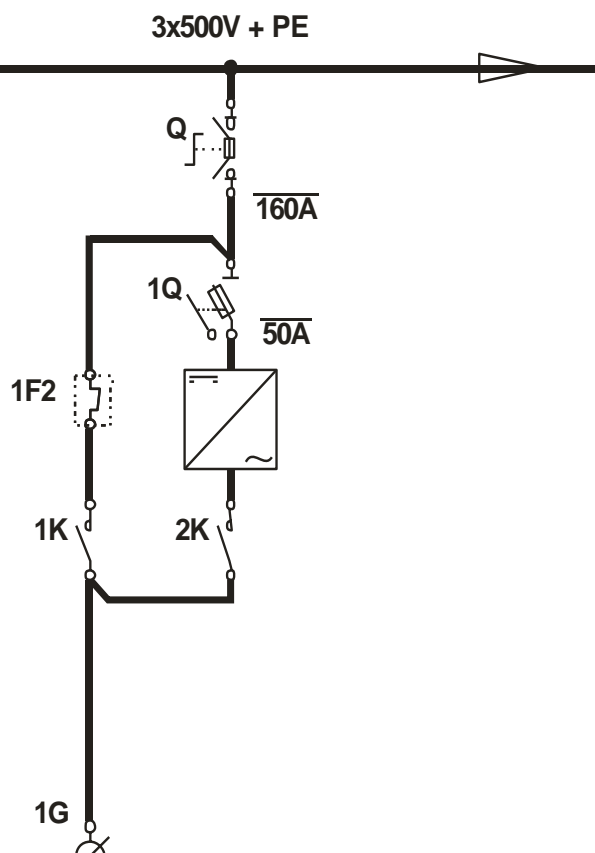
The switchgear housing is made of steel sheets. The whole unit is based by a common support frame. The housing is equipped with brackets that allow for the switchgear to be hung on a chain or to be placed directly on the ground.

## MODE OF OPERATION

The control of 500 V outlet is carried out in three control mode: WITHOUT FREQUENCY CONVERTER, LOCKOUT, WITH FREQUENCY CONVERTER. Control mode is chosen by position change of switcher inside switchgear.

In WITHOUT FREQUENCY CONVERTER mode receiver works live 500V voltage and full loading. In FREQUENCY CONVERTER receiver is switched on by frequency converter and it works live lower than 500V, by incomplete loading and frequency lower than 25Hz. **FREQUENCY CONVERTER mode applies to saving electrical energy, which is consumed by receiver (for example fan).** Choice of LOCKOUT MODE prevents switching on the outlet or it causes turning off the outlet.

## SCHEMATIC DIAGRAM



Orders should be submitted in writing or by fax to the address:

 **Instal-Service PL**

Spółka z ograniczoną odpowiedzialnością  
Spółka komandytowa

58-506 Jelenia Góra, ul. Wrocławska 15a

tel. (+48 075) 64-57-950

fax. (+48 075) 64-57-951

e-mai: instal@instal-service.pl